

Vibrations during operations;

- Causes nuts & bolts to loose
- Creating a need to Re-Torque.

But there is no visual indication of a loose nut, so you have to Re-Torque each one of them.

Checkpoint Indicator's;

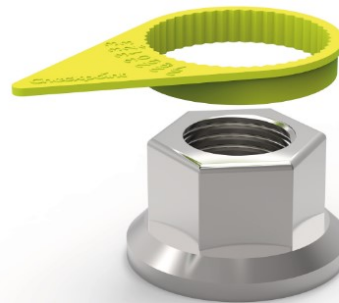
- An intelligent solution
- Enabling Quick Visual Checks
- Higher Productivity
- **Enhanced SAFETY**



Mobility Solutions for Metallurgy Operations by Tyre Experts

Checkpoint[®]
THE ORIGINAL AND THE BEST

OUR RANGE



Loose Nut Indicator



Dustite*



Dustite LR*

Protect from Dust with Dustite/LR (*Check with us sizes available)

For more Information Contact Us:

Web: www.checkpointsafety.com

Email: sales@tyrexperts.com

Call/WhatsApp: 9136604919

